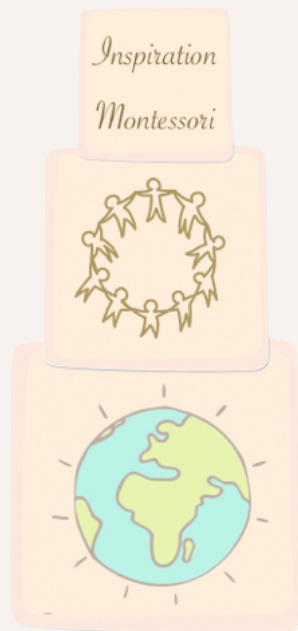


Consultant Fee Table

	Montessori Mentor Meetings	Lesson Demo + Practice + Feedback	Classroom Observation + Written Feedback	Classroom Set Up	School Wide Workshop
Single Session	\$120/session	\$135	\$150		
Once a month (3 month minimum)	\$113/session	\$128	\$120		
Reoccurring Sessions (8 meeting minimum)	\$98/session	\$120	\$119		
Once a week (12 weeks minimum)	\$95/session	\$110	\$118		
				\$530/day <small>(days needed decided based on needs of the client)</small>	\$350/Virtual 60 minutes
					\$600/Virtual 120 minutes
					\$5,500/Full Day In-Person



*Schedules are set based on the availability of the client and consultant

*Sessions are around 60 minutes